

# The Flow

September 2007 Newsletter  
Marti Daltry, President

## Special Events & Meetings

- Oct 3, 2007 Nature Plant Identification
- Oct 5, 2007 CRCA Board Meeting
- Oct 27, 2007 Midpoint Paddle Sprint
- Nov 3, 2007 CHNEP Nature Festival
- Nov 16, 2007 SWFL Water Resources Conference



*Local Algae Bloom Photo by Mike Valliquette*

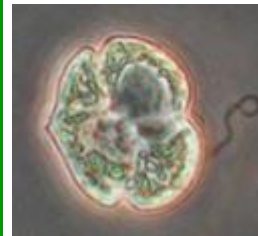
Please check for updates and additional meetings at [crca.caloosahatchee.org](http://crca.caloosahatchee.org)  
Also, you can renew your membership online.

### Suit over The Vue



CRCA's opposition to The Vue, a 27-story tower slated for construction on the western edge of Centennial Park, goes to court on August 2. CRCA seeks a smaller building and it be set back from the waterfront and not take land from Centennial Park. [\[Article\]](#)

### Mote Releases Red Tide Report



A new report calls for scientists, policymakers and the public to "move beyond polarized debate" about the causes of red tide and instead find ways to reduce coastal pollution and red tide outbreaks. [\[Dr. Alcock Report\]](#) [\[Bonita\]](#)

### Labelle - SFWMD Park Analysis



At a meeting on Aug 14, 2007 conceptual drawings were presented regarding the possibility of establishing a community park on 176 acres north of LaBelle for passive recreation. This plan addresses acceptable uses, security, & other issues. [\[Analysis\]](#) [\[Plan Overview\]](#)

### Trouble Ahead, Trouble Behind



The Sugar Cane League has announced its intention to file suit to require that all SFWMD pumps, culverts, and spillways meet the same NPDES permitting requirements as a judge ruled applies to ag water pumping into Lake O. [\[Business Journal\]](#) [\[Intent to Sue\]](#) [\[Miami Herald\]](#)

### Stormwater Rule Report



A report entitled "Evaluation of Current Stormwater Design Criteria in Florida" will play a major role in the development of the statewide stormwater treatment rule. Learn more about it and offer your comments to DEP. [\[Cover Letter\]](#) [\[Comments Letter\]](#) [\[Download Reports\]](#)

### Comments on LORSS



Many groups have submitted comments on the revised Draft Supplement Environmental Impact Statement, with regards to Lake O water release scheduled to be implemented in December. [\[Watershed Council\]](#) [\[Audubon of Florida\]](#) [\[SCCF Letter\]](#) [\[Impact Statement\]](#) [\[PURRE\]](#)

## To Grow or Not to Grow



As economists assess the potential impacts of a long-term drought in Florida on agriculture, individual farmers face decisions on whether they should plant crops this fall given the low level of lake and groundwater storage. [\[Economics\]](#) [\[Farmers\]](#)

## Blueway Ribbon Cutting



The Phase 3 ribbon cutting ceremony for the Great Calusa Blueway will be Oct 30 at Riverside Community Center in Ft. Myers. The free event is 4-6 p.m. & includes kayak demonstration, eco-information, area dignitaries, refreshments and more. [\[Details\]](#) [\[Website\]](#) [\[Blueway Festival\]](#)

## Riverfest at Riverside



Riverside Retreat is hosting an event October 6, 10am - 4pm, as Riverfest at Riverside. We are partnering with the FPAN. It will be a day of fun & info. We plan to have nature hike, pottery, weaving & more. Charges \$15 per booth without electricity. [\[More Details\]](#) [\[Retreat Web\]](#)

## Protest Stops Alva Project



Well-organized Alva residents rallied to convince Lee County commissioners on August 21, to block a 45-lot gated community in the small, rural community northeast of Fort Myers, arguing it would harm the rural life unique to the area for generations. [\[Protest Details\]](#)

## Hometown Democracy Ballot



It's not easy to intimidate the business community in Florida, but big business seems truly terrified of the Florida Hometown Democracy ballot initiative that may be headed to voters in November 2008. [\[St. Petersburg Times\]](#)

## Glades Yacht Center Planned



River Forest Yacht Center in Stuart will expand with a second facility in Glades County as construction begins this fall on a River Forest Yacht Center near the Ortona Lock on the Caloosahatchee River. [\[Details\]](#)

## New Wastewater Plant



Fort Myers City Council have approved a new wastewater treatment plant expected to be built in the next three years to meet the demands of the city's expanding east side. [\[Details\]](#) [\[Map\]](#)

## New Fertilizer Rule



FDACS has adopted a statewide Urban Turf Fertilizer Rule. It reduced phosphorus and nitrogen in fertilizers for urban lawns, but precludes local municipalities from implementing more stringent rules that would achieve greater environmental protection. [\[Rule\]](#)

## River Ride 2007



The 11th Annual Caloosahatchee River Ride is the morning of Sunday, Nov. 18. Over 100 riders participated in 2006 and we expect more this year. Plan now to join us for this always enjoyable Riverwatch tradition. Contact us for details. [\[Auto Email\]](#)

## Cape Water Action



CWA is a newly formed organization designed to be an educational public outreach to the citizens of Cape Coral and is affiliated with the CRCA-Riverwatch. CWA is conducting its first meeting on November 17, 2007 from 13:00 to 15:00. [\[About CWA\]](#) [\[Meeting Details\]](#)

## Manatees May Lose Protection



[Peterburg Times\]](#)

Florida Fish and Wildlife Conservation Commission, with its 3 new Crist appointees, is set to remove manatees from the endangered list and slash 90 positions from the division that enforces the boating speed zones designed to protect manatees. [\[St.](#)

## Lake O Flow Way



St. Lucie River activists have renewed calls for a marshy "flow way" south of Lake Okeechobee, a project they say would save money on Everglades restoration and improve the health of the St. Lucie Estuary. [\[Palm Beach Post\]](#)

See CRCA web page for more details on each of the newsletter articles <http://crca.caloosahatchee.org/>