

The Flow

December 2016 Newsletter
John Capece, Editor

Special Events & Meetings

- Jan 4: [CRCA Board meeting](#) in Ft Myers
- Jan 5: [Calusa Rangers meeting](#) in Ft Myers
- Jan 5-8: [Everglades Coalition Conference](#) in Ft Myers
- JAN 13: [Southwest Florida Water Resources Conference](#) at FGCU
- Jan 13: [Sea Level Rise Symposium](#) on Captiva

Editorial Disclaimer
Visit the CRCA web site
crca.caloosahatchee.org
Join us at [Facebook](#)



Waterkeeper seeking volunteer Rangers to patrol & sample waterways.

Riverwatch Helps American Rivers



Groups from Ferndale, Washington to Fort Myers, Florida participated in the 25th Annual American River 25th National River Cleanup®. Over 53,000 volunteers removed more than 3.4 million pounds of trash from nearly 2,000 cleanup sites. Thank you to CRCA members and FGCU students who made this happen! [\[American Rivers\]](#)

Our Rangers are not Lone



If you become a Calusa Waterkeeper Ranger then you won't be alone. The volunteer program to help patrol regional waterways (with sampling bottles, not guns) from Lake O to Caloosahatchee Estuary and from Estero Bay to Charlotte Harbor meets on Thursday, Jan 5 at 7pm in the Ft Myers library. [\[Ranger Meeting Announcement\]](#)

Waterkeeper Comes to Beach



CRCA Executive Director Jack Green is reaching out to his fellow Fort Myers Beach residents with a support appeal letter for Riverwatch and its new Waterkeeper program. The letter was sent to 850 beachers with the remaining 6500 addresses planned when finances permit. [\[Appeal Letter\]](#) [\[Letter Back Images\]](#)

FGCU Internship Symposium



The FGCU STEM Undergraduate Research and Internship symposium was held on Dec 2. The Riverwatch interns Kayla and Florine, presented posters of their work with the association. It was a wonderful opportunity for the interns to describe to other students the goals of their Riverwatch projects. [\[Pic1\]](#) [\[Pic2\]](#) [\[Poster\]](#)

Water Resources Conference



The 26th Annual Southwest Florida Water Resources Conference is tasked each year to predict our water future. Come hear the predictions on Jan 13 at FGCU. Riverwatch has co-hosted the event for more than 10 years. Riverwatch members are encouraged to attend to learn about important water issues. [\[Fort Myers Beach Observer\]](#) [\[Conference Website\]](#)

Coastal Angler Magazine



Each month Riverwatch writes articles for the Okeechobee edition and the Ft. Myers edition of the fishing enthusiast publication titled Coastal Angler. It's a great way to reach out to the fishing communities throughout our area. [\[Snapshot\]](#) [\[Article\]](#) [\[Coastal Angler Magazine\]](#)

North vs South



SFWMD published an infographic comparing water storage north and south of Lake O. The conclusion they want to highlight is obvious: SFWMD prefers north to south for reasons of operations, storage, economy and even environment. Unfortunately they have delayed meaningful storage until pressured. [\[Infographic\]](#)

EAA Land Purchase Rally



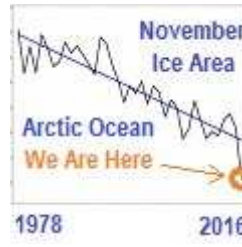
Riverwatch was at the Dec 8 rally outside SFWMD HQ with Sierra Club to support Senator Negron's EAA Land Purchase Plan. John Cassani, our Riverkeeper, gave a speech. Indian Riverkeeper, Bullsugar, Riverwarrior Lodge and the Friends of the Loxahatchee Refuge also participated in the rally. [\[Flyers\]](#) [\[Photos\]](#)

Matlacha Protests Cape Coral



After Cape Coral annexed pieces of Matlacha, residents of both Pine Island and Matlacha protested and began to schedule meetings to discuss incorporation as a defense against further annexation by a city they see as having damaged their waters and other vital interests. [\[Cape Coral Breeze\]](#) [\[News Press\]](#) [\[Photo\]](#)

95%, 99.7% or 99.99%



Watch for arctic ice area data on Jan 1, when ice area is least variability. The data will be 2, 3 or 4 "standard deviations" below average, reflecting 95%, 99.7% or 99.99% chance the climate system is abruptly changing. Given those odds, are you betting your grandchildren's lives by doing nothing? [\[NSIDC\]](#) [\[Graph\]](#) [\[Ice Area Link\]](#) [\[Ice Volume Link\]](#)

Data Reveal The Real Sources



While Mitch Hutchcraft claims there is a well-established scientific link between septic tank and high level of nutrient in our estuary, CRCA member David Bogert clarifies this scientific link: septic tank are responsible for 8% of the problem while fertilizers are responsible for 84%. [\[News-Press\]](#) [\[Hutchcraft Opinion\]](#) [\[Leland Comment\]](#) [\[Grier Comment\]](#)

FGCU Students with Riverwatch



FGCU students made a video of their Riverwatch project on toxic algae blooms. Their purpose was to report facts and raise awareness about this issue. They educated other students about the pollution problem and asked people to sign a petition for clean water. CRCA thanks them for their investments. [\[Video\]](#)

Lee County Conservation Program



John Cassani explains the 20/20 conservation land program is not new. Grass-roots activists demanded it back in 1996. At that time the referendum received 53% voter support. Since then Lee's population has grown from 280,000 residents to almost 700,000 and voter support has grown from 53% to 84%. [\[News-Press\]](#)

Chiquita Lock ERP Application



FDEP requested more information from Cape Coral, the Chiquita Boat Lock removal applicant. While the questions are essential, DEP may be doing this merely as a formality so they can say the issues were raised and resolved, should the issue ever end up in court. It could be administrative theater. [\[Request For Additional Information\]](#) [\[Previous News Box\]](#)

Fisheating Creek Ruling



A new ruling in the legal battles over Fisheating Creek states that Fisheating Creek/Cowbone Marsh boat access must be maintained by a cut/dredged channel at least 3ft deep and not narrower than 25ft, as advocated by the group Save Our Creeks. The State of Florida wanted to fill it the cut. [\[Glades County Democrat\]](#) [\[Map\]](#) [\[Comment\]](#)

Red Tide in Charlotte Harbor



The alarming amount of pollution from human waste in Charlotte Harbor estuary is contributing to the recent red tide. Dr. Brian Lapointe completed a study showing the wastes are fuel for the algae bloom. Waterways can be saved if the county gets good sewer systems in the coming years. [\[NBC2\]](#)

Riverwatch Intern



Kayla Koszela, an FGCU student in Environmental Studies, recently completed her internship with Riverwatch. She accomplished several tasks, working with Mary Rawl on events, communication and monitoring of the River. She said she learned much about running a successful non-profit. Thank you Kayla! [\[Internship Poster\]](#)

WWALS Now Suwannee Riverkeeper



The Waterkeeper Alliance Board of Directors has approved its Affiliate member, WWALS Watershed Coalition to become a full Member. The newly appointed Suwannee Riverkeeper, John S. Quarterman, will work to protect and preserve the Suwannee River Basin. [\[Press Release\]](#)